



Warren Family Homes

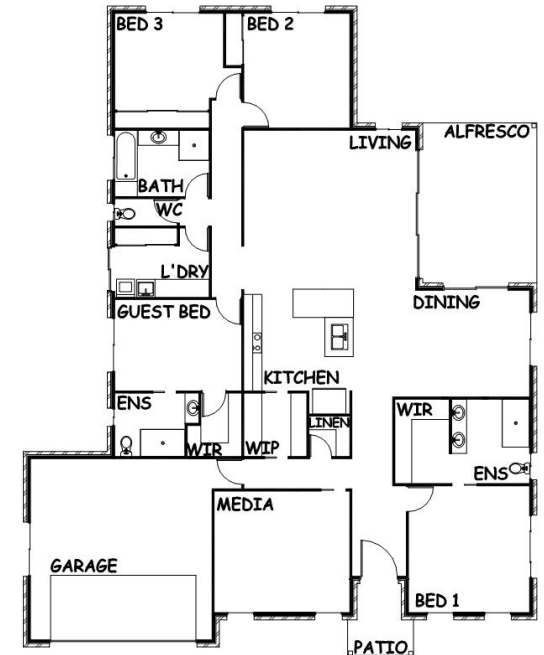
Pty Ltd

QBCC: 1071913

ISLA 289



Impressions for illustration purposes only



Features:

- 4 Bedrooms
- 1 Living
- 1 Media
- 3 Bathrooms
- 2 Car Spaces

Floor Areas:

- Dwelling: 265.1 m²
- Alfresco: 19.9 m²
- Patio: 4.3 m²
- Total Area: 289.3 m²

Dimensions:

- Width: 18.17 m
- Length: 22.70 m
(gutter to gutter)



Bundaberg's Most TRUSTED & RELIABLE Builder

P: 07 4159 0222 E: bundy@warrenfamilyhomes.com.au W: www.warrenfamilyhomes.com.au

Visit Bundaberg's only fully complete builder's display centre at 51 Princess Street, Bundaberg East, QLD, 4670

